



AFO LUX

AFOLUX Series

Affordable Luxury For You

7"~12" Fanless All-in-one Panel PC



Maximize your business potential



The streamline AFOLUX all-in-one panel PC with stable wireless LAN connectivity and a wide range of mounting options can easily be implemented in a diverse range of applications to fully maximize your business potential.



AFOLUX All-in-one Panel PC

Maximize your business potential

AFL-07A-LX

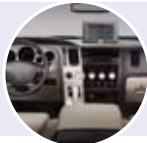
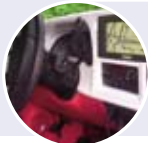
- 7" embedded fanless panel pc with AMD LX-800 CPU
LX-800 CPU
 - 1.Resolution:800*480
 - 2.Brightness(cd/m²):220
 - 3.Touch Screen
 - 4.Audio speakers inside
- 256/512 MB memory support
- Complete I/O support with 2xRS232 COM ports, 2xUSB 2.0 and dual LAN support
- 802.11 b/g wireless antenna inside
- The best choice for Thin Client, Windows® CE 5.0 and Windows® XP Embedded

Vehicle Interior Device

Truck PC
Real-time delivery checking

General Computing

PC based testing center
Distance learning



AFL-08A-LX

- 8.4" embedded fanless panel pc with AMD LX-800 CPU
 - 1.Resolution:800*600
 - 2.Brightness(cd/m²):220
 - 3.Touch Screen
 - 4.Audio speakers inside
- 256/512 MB memory support
- Complete I/O support with 2xRS232 COM ports, 2xUSB 2.0 and dual LAN support
- 802.11 b/g wireless antenna inside
- The best choice for Thin Client, Windows® CE 5.0 and Windows® XP Embedded

Industrial Applications

Plant environment monitoring system
Factory automation platform
Manufacturing shop flow
Equipment and device control

Home and Building Automation

Digital surveillance system
E-home platform
Home IA control terminal



AFL-12A-LX

- 12" embedded fanless panel pc with AMD LX-800 CPU
 - 1.Resolution:1024*768
 - 2.Brightness(cd/m²):450
 - 3.Touch Screen
 - 4.Audio speakers inside
- 256/512 MB memory support
- Complete I/O support with 2xRS232 COM ports, 2xUSB 2.0 and dual LAN support 1024x768 high resolution
- 802.11 b/g wireless antenna inside
- The best choice for Thin Client, Windows® CE 5.0 and Windows® XP Embedded

Self-Service Kiosk

Receptionist kiosk in hotel and business premises
Self registration terminal in hospital and airport.
Interactive photo kiosk
Video rental kiosk
Ticket vending machine for transportation use
Self-service POS terminal
Price-check machine



Always Connected

IEI's network advantage

Features

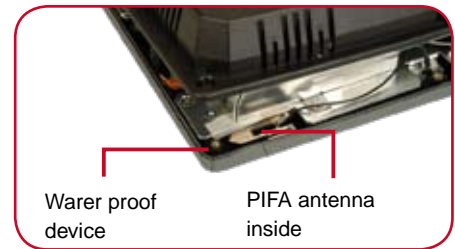
Wireless Anywhere

If you are still looking for stable wireless LAN connectivity, the integrated PIFA antenna on the AFOLUX ensures you can have an uninterrupted wireless connection. PIFA type antennas can receive high-quality, uniform signals in any location from all directions without any signal degradation or impedance and are the most efficient on the market today. The inverted F-design generates an omni-directional signal field through the exceptionally uniform 3D signal sphere. PIFA enhances transmission and reception through the special cubic structure to ensure optimum wireless performance.



Dual LAN Support

To provide you with the "Always connected" advantage, IEI has implemented dual LAN support along side the PIFA wireless technology. Dual independent 10/100 Mbps Ethernet design reduces the hazard of network collisions and crashes or virus infection. With the AFOLUX series, the network connection between the AFOLUX and the server never fails.



Best Reliability

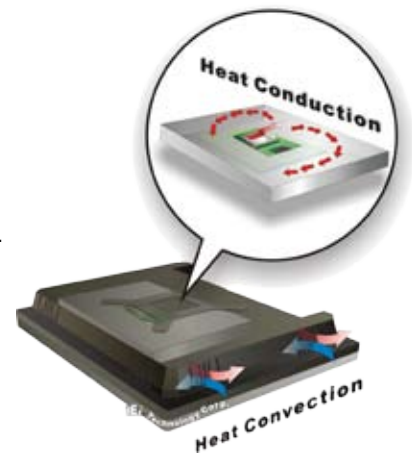
Features

Fanless System

The AFOLUX series is designed with an AMD LX-800 platform. The AMD Geode LX 800 generates less heat than other processors but maintains an above-average performance enabling a fanless design. A fanless design reduces the failure caused by fans and extends the operation life of the device.

Rugged Mechanism Design

The AFOLUX is directly mounted internally to a metal main frame rather than a fragile plastic cover. The ABS/PC (Acrylonitrile Butadiene Styrene/Polycarbonate Alloy) makes the AFOLUX case stiffer, more solid and more durable than if conventional material were used.



Anti-Vibration Protection

IEI AFL-12A is equipped with a drive kit to increase the resistance of the hard drive to side shocks and vibrations. The drive kit extends the drive life cycle in environments such as vehicles and marine applications.

IP 64 Dustproof and Waterproof Front Panel

The AFOLUX front panel is IP 64 compliant. IP 64 compliance guarantees the front panel is dustproof and water-proof. The AFOLUX front panel can withstand any industrial environment where dust and drizzle is encountered.



IQ Mounting

Features

IEI IQ mount design allows the AFOLUX series to be easily integrated into a diverse variety of applications. The ARM design for industrial control, panel mount for kiosk device, wall mount for e-home terminal, stand design for thin client application and shop flow for manufacturing management. The AFOLUX series' intelligent mounting design brings more value to you.



Panel Mounting



Panel Mount Kit
AFLPK-07
AFLPK-08
AFLPK-12

Wall Mount Kit



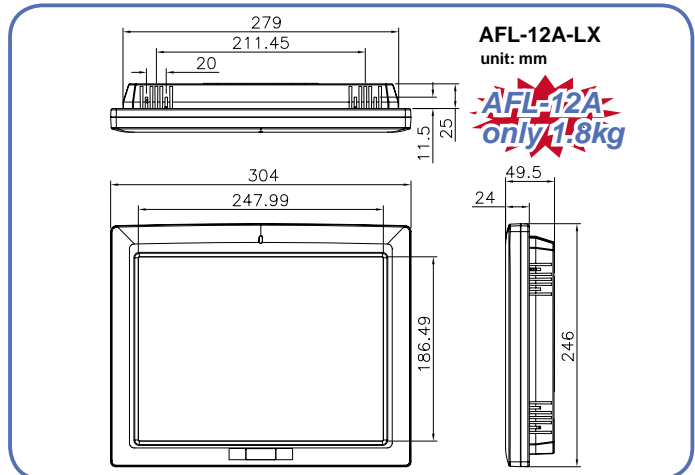
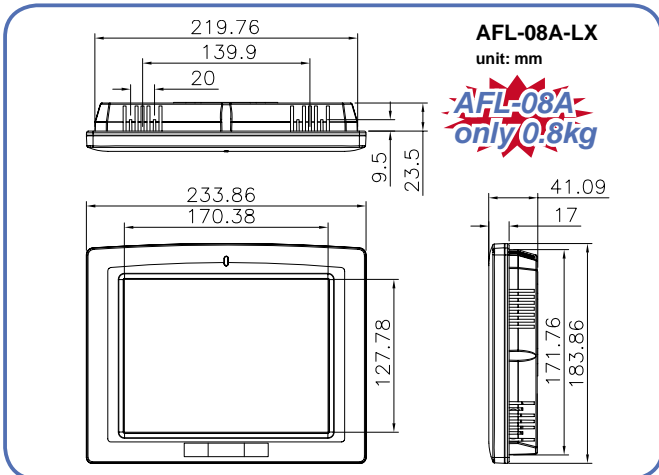
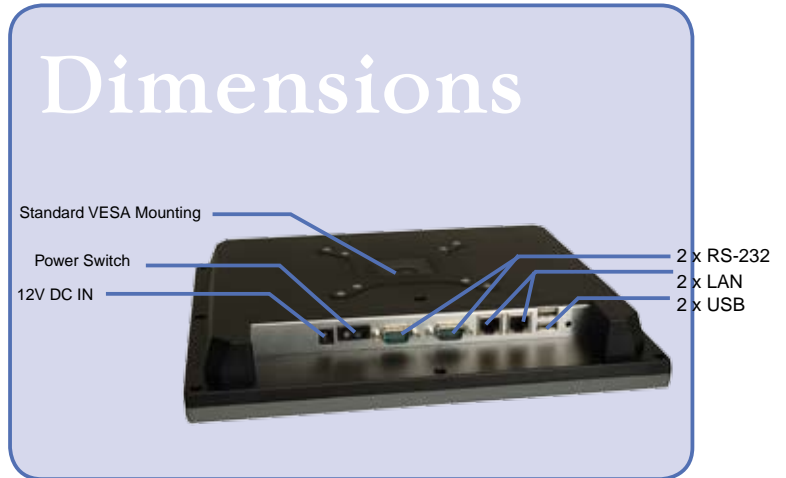
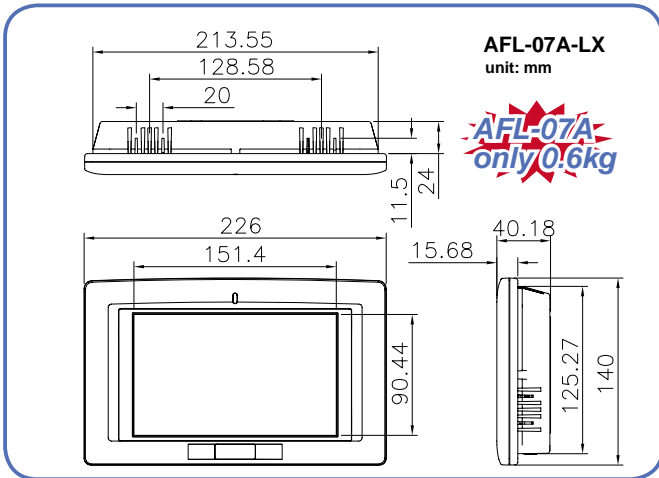
Wall Mount Kit
AFLWK-07
AFLWK-08
AFLWK-12

12.1" LCD - 1024x768 high resolution & 450 nits high brightness Features

Affordable Luxury Multimedia Applications

The AFOLUX-12A is superior multimedia effects for diverse applications. Integration into advertising devices is especially effective since the 1024x768 high resolution screen provides crystal clear images. The high brightness panel enables the AFOLUX to be used outdoors in strong sunlight as an information kiosk.

For better sound track effects, the AFOLUX-12A has two integrated speakers. The speakers provide great sound quality for arcade games where enhanced sound effects for improved satisfaction is essential.



All-in-one Panel PC - LX

Embedded OS Support

IEI provides optional pre-installed Windows XP Embedded or Windows CE 5.0 turnkey solutions tailored for the AFOLUX series. These turnkey solutions have one Compact Flash memory card with either Windows XP Embedded or Windows CE 5.0 pre-installed, one Windows XP Embedded or Windows CE 5.0 license, and one CD that contains all related SDK (Software Development Kit) and user manuals.



AFLCF-07-LX-CE
AFLCF-08-LX-CE
AFLCF-12-LX-CE

128 MB



Includes:

- Windows CE 5.0 OS image with license
- Thin Client turnkey solutions
- SDK



AFLCF-07-LX-XPE
AFLCF-08-LX-XPE
AFLCF-12-LX-XPE

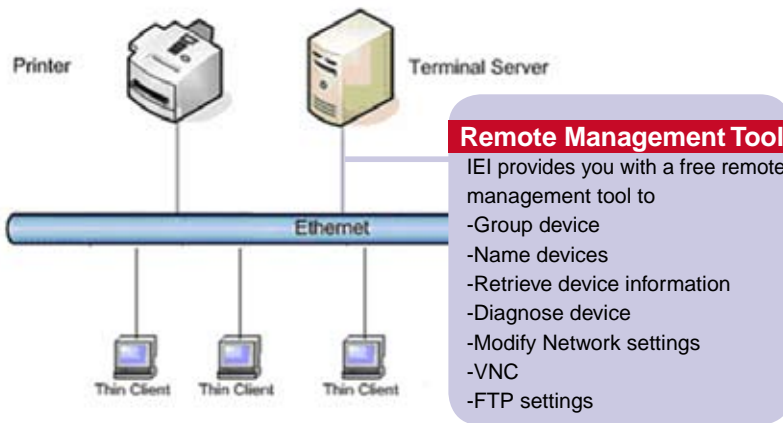
1 GB



Includes:

- Windows XPE OS image with license
- Thin Client turnkey solutions

Thin Client Technology



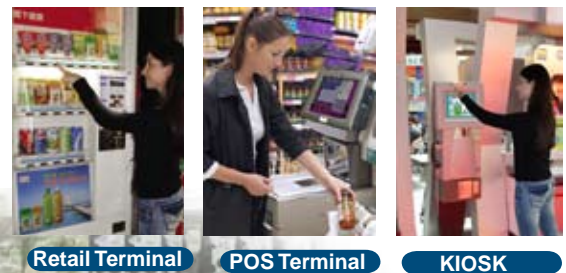
AFOLUX also provides built-in Thin Client Technology in embedded OS turnkey solutions. The thin client technology enables an AFOLUX to access Microsoft Windows-based applications and web-based applications. These applications actually live and run on Microsoft Terminal Service servers, so an AFOLUX can act as a thin client terminal and remotely execute legacy applications, Windows-based SCADA systems, and Windows applications such as word processors, spreadsheets, and database queries.

Advantages of Thin Client Technology

- Reduced hardware costs
- Reduce software costs
- Reduced maintenance costs
- Centrally controlled resources
- Security and protection
- Client crash prevention

Applications

- KIOSK
- Thin Client POS
- Logistics
- Database system terminals
- OA and IT



Specifications



AFL-07A
only 0.6kg



AFL-08A
only 0.8kg



AFL-12A
only 1.8kg

Model	AFL-07A-LX	AFL-08A-LX	AFL-12A-LX
LCD Size	7"	8.4"	12.1"
Max Resolution	800 * 480	800 * 600	1024 * 768
Brightness (cd/m ²)	220	220	450
Contrast Ratio	400:1	500:1	700:1
LCD Color	262K	262K	262K
Pixel Pitch (mm)	0.1905(H) x 0.1905(V)	0.213(H) x 0.213(V)	0.240(H) x 0.240(V)
Viewing Angle (H-V)	140/100	130/110	160/160
SBC Model	AFLMB-LX800	AFLMB-LX800	AFLMB-LX800
CPU	AMD LX800-500Mhz	AMD LX800-500Mhz	AMD LX800-500Mhz
Chipset	AMD LX800 + AMD CS5536	AMD LX800 + AMD CS5536	AMD LX800 + AMD CS5536
RAM	Maximum memory supported 1GB (SODIMM X 1) Supports for DDR333 / 400Mhz	Maximum memory supported 1GB (SODIMM X 1) Supports for DDR333 / 400Mhz	Maximum memory supported 1GB (SODIMM X 1) Supports for DDR333 / 400Mhz"
I/O Ports	2 x RS232 COM Port 2 x RTL8100C for 10/100Mbps 2 x USB 2.0 1 x Power Switch 1 x Reset Button	2 x RS232 COM Port 2 x RTL8100C for 10/100Mbps 2 x USB 2.0 1 x Power Switch 1 x Reset Button"	2 x RS232 COM Port 2 x RTL8100C for 10/100Mbps 2 x USB 2.0 1 x Power Switch 1 x Reset Button
SSD	CFII	CFII	CFII
Audio	2 x AMP 1.5W internal speakers	2 x AMP 1.5W internal speakers	2 x AMP 1.5W internal speakers
Expansion	1x Mini PCI (Wireless Lan 802.11b/g Module)	1x Mini PCI (Wireless Lan 802.11b/g Module)	1x Mini PCI (Wireless Lan 802.11b/g Module)
HDD Drive Bay	N/A	N/A	1 x 2.5" HDD bay
Construction Material	ABS Plastic & Aluminum	ABS Plastic & Aluminum	ABS Plastic & Aluminum
LED Function	1 x LED on Front Panel for Power ON/OFF	1 x LED on Front Panel for Power ON/OFF	1 x LED on Front Panel for Power ON/OFF
Mounting	Panel / Wall / Rack / Stand / Arm mounting	Panel / Wall / Rack / Stand / Arm mounting	Panel / Wall / Rack / Stand / Arm mounting
Front Panel Color	Gray	Gray	Gray
Dimension (WxHxD) (mm)	226(W) x 140(L) x 41(D)	234(W) x 184(L) x 42(D)	304(W) x 246(L) x 50(D)
Operating Temperature (°C)	0~50°C	0~50°C	0~50°C
StorageTemperature (°C)	-20°C ~60°C	-20°C ~60°C	-20°C ~60°C
Vibration	-5~17Hz 0.1 double amplitude displacement -17~640 Hz 1.5G acceleration peak to peak	-5~17Hz 0.1" double amplitude displacement -17~640 Hz 1.5G acceleration peak to peak	-5~17Hz 0.1 double amplitude displacement -17~640 Hz 1.5G acceleration peak to peak"
Shock	10G acceleration peak to peak (11ms)	10G acceleration peak to peak (11ms)	10G acceleration peak to peak (11ms)
Net Weight	0.6/kg	0.8 / Kg	1.8 / Kg
IP Level(front panel)	IP 64	IP 64	IP 64
Safety	Complies with UL, CE and CCC	Complies with UL, CE and CCC	Complies with UL, CE and CCC
EMC	Complies with CE and FCC Class B	Complies with CE and FCC Class B	Complies with CE and FCC Class B
Touch Screen	Resistive Type 4-Wire (touch controller IC is on board)	Resistive Type 4-Wire (touch controller IC is on board)	Resistive Type 5-Wire (touch controller IC is on board)
Power Adapter	-P/N:63000-UP0451E12P81L-RS -45W -Input:90~260VAC@ 50/60Hz -Output:12VDC	-P/N:63000-UP0451E12P81L-RS -45W -Input:90~260VAC@ 50/60Hz -Output:12VDC	-P/N:63000-UP0451E12P81L-RS -45W -Input:90~260VAC@ 50/60Hz -Output:12VDC
Power Requirement	12VDC	12VDC	12VDC
Power Consumption	20W	20W	29W

Ordering Information



AFL-07A 7" Slim Outlook Model

- AFL-07A-LX/WT-R/256MB
7" fanless panel pc with AMD LX-800 CPU, 256MB DDR RAM, wireless module and touch screen, RoHS
- AFL-07A-LX/WT-R/512MB
7" fanless panel pc with AMD LX-800 CPU, 512 MB DDR RAM ,wireless module and touch screen, RoHS



AFL-08A 8.4" Optimal Screen Size Model

- AFL-08A-LX/WT-R/256MB
8.4" fanless panel pc with AMD LX-800 CPU, 256MB DDR RAM, ,wireless module and touch screen, RoHS
- AFL-08A-LX/WT-R/512MB
8.4" fanless panel pc with AMD LX-800 CPU, 512MB DDR RAM, ,wireless module and touch screen, RoHS



AFL-12A 12.1" High Resolution Model

- AFL-12A-LX/WT-R/256MB
12.1" fanless panel pc with AMD LX-800 CPU, 256 MB DDR RAM,wireless module and touch screen, RoHS
- AFL-12A-LX/WT-R/512MB
12.1" fanless panel pc with AMD LX-800 CPU, 512 MB DDR RAM,wireless module and touch screen, RoHS

Packing list

- 1 x Screw Kit
- 1 x Power Cable
- 1 x Power Adapter
- 1 x Jumper Pack
- 1 x User Manual - CDROM

Option

	AFL-07A-LX	AFL-08A-LX	AFL-12A-LX
Panel mounting kit	AFLPK-07	AFLPK-08	AFLPK-12
Wall mounting kit	AFLWK-07	AFLWK-08	AFLWK-12
Rack mounting	AFLRK-07	AFLRK-08	AFLRK-12
OS: WIN CE 5.0	*AFLCF-07-LX-CE	*AFLCF-08-LX-CE	*AFLCF-12-LX-CE
OS: WIN XPE	*AFLCF-07-LX-XPE	*AFLCF-08-LX-XPE	*AFLCF-12-LX-XPE

* Note: Include - CF card, OS image with WINCE or XPE license and IEI Thin Client software package
 CF card capacity with $\begin{cases} \text{CE 5.0 : 128MB} \\ \text{XPE : 1GB} \end{cases}$

AFO LUX
 All-in-one Panel PC



Headquarters

IEI Technology Corp.

TEL : +886-2-86916798 FAX : +886-2-66160028
 sales@ieiworld.com www.ieiworld.com
 No. 29, Zhongxing Rd., Sijih City, Taipei County, 221, Taiwan

America-United States

IEI Technology USA Corp.

TEL : +1-562-690-6677 FAX : +1-562-690-0898
 sales@usa.ieiworld.com www.usa.ieiworld.com
 515 N. Puente St., Brea, CA 92821

China

Armorlink SH Corp.

TEL : +86-21-54429000 FAX : +86-21-54429100
 sales@ieiworld.com.cn www.ieiworld.com.cn
 No.515, Shenfu Road, Minhang District, Shanghai, China